



**City of Tallmadge
Design Control Overlay District (DCOD)
Design Guidebook**



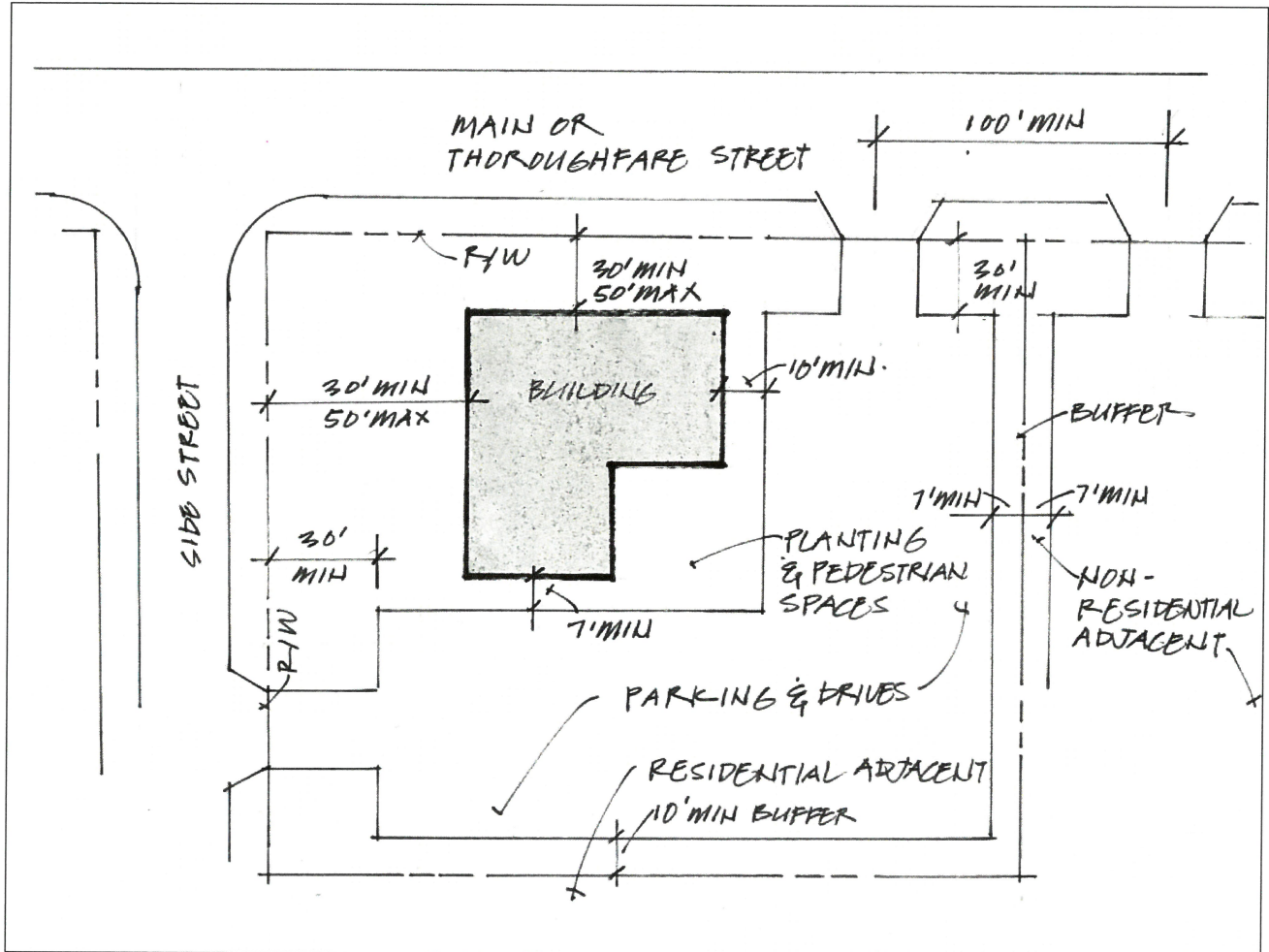
Table of Contents

1175.02	Application of District Regulations Design Control Overlay District Map	Page 3
1175.03	Development Standards Setback Requirements	Page 4
1175.04	Design Criteria – Buildings that are not Recognized Historic Structures	Pages 5-6
1175.05	Criteria for Site Development	Pages 7-13
1175.06	Criteria for Landscaping	Pages 14-24
1175.07	Signs – Standards and Design Criteria	Pages 25-30
Appendix A	Color Illustrations	

1175.02 Application of District Regulations



Design Control Overlay District (DCOD) boundary



Setback requirements sample plan

1175.04

Design Criteria – Buildings That Are Not Recognized Historic Structures



*Well proportioned
and detailed building
examples*

1175.04

Design Criteria – Buildings That Are Not Recognized Historic Structures, continued

Illustrations of acceptable exterior colors can be found in Appendix A of this Guidebook

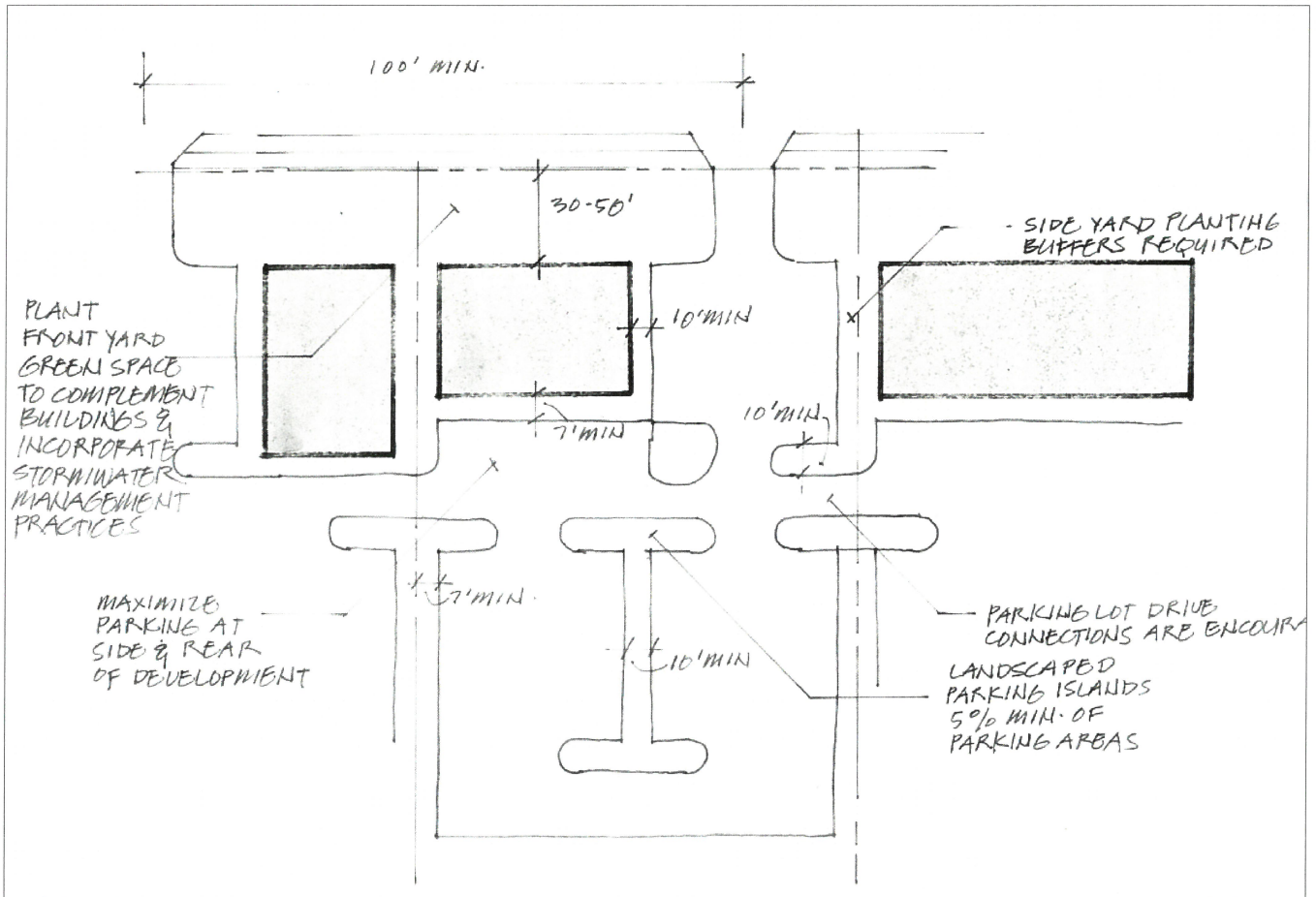


Well proportioned and detailed building examples

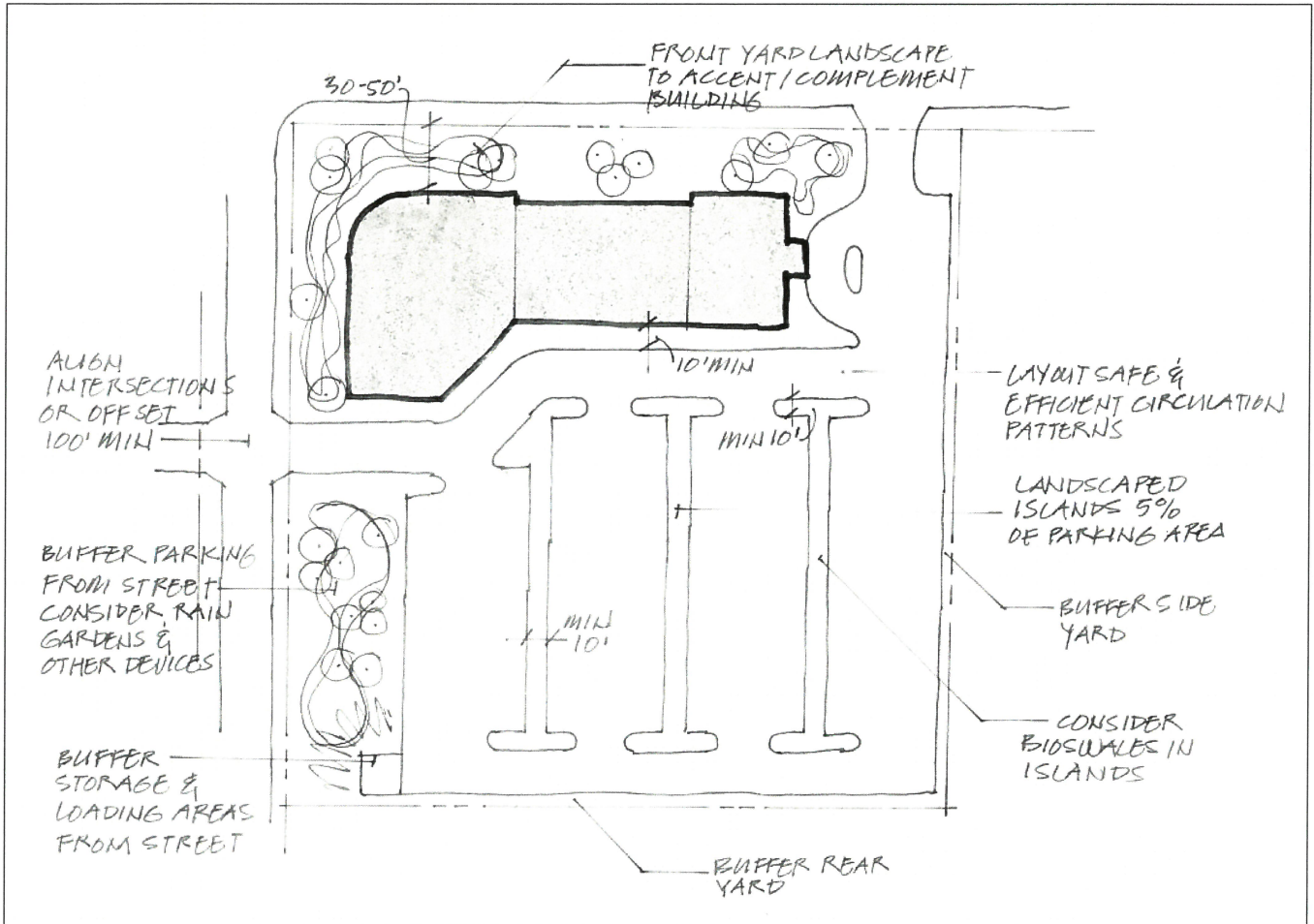


1175.05

Criteria for Site Development

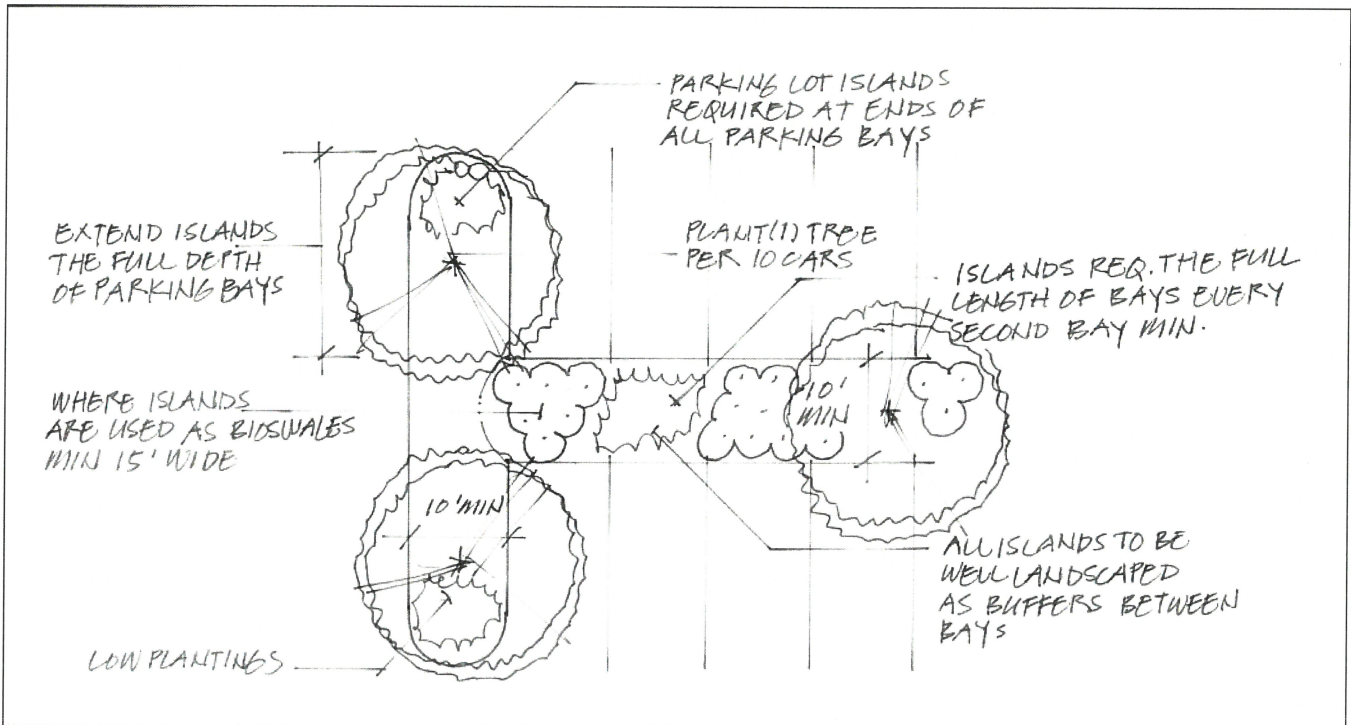


Individual building site layout sample plan



Complex building site layout sample plan

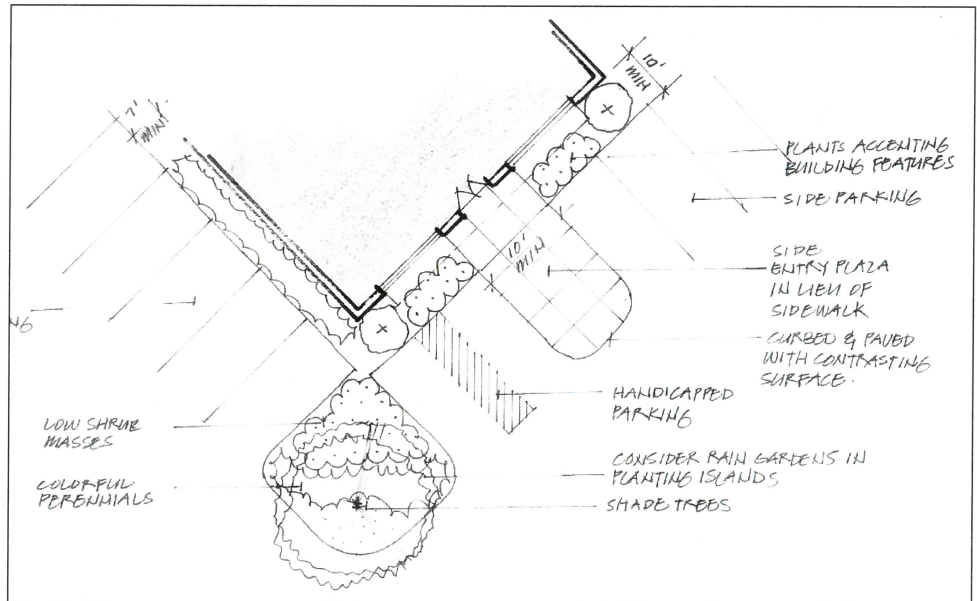
Provide pedestrian ways in larger parking lots



Parking islands layout example

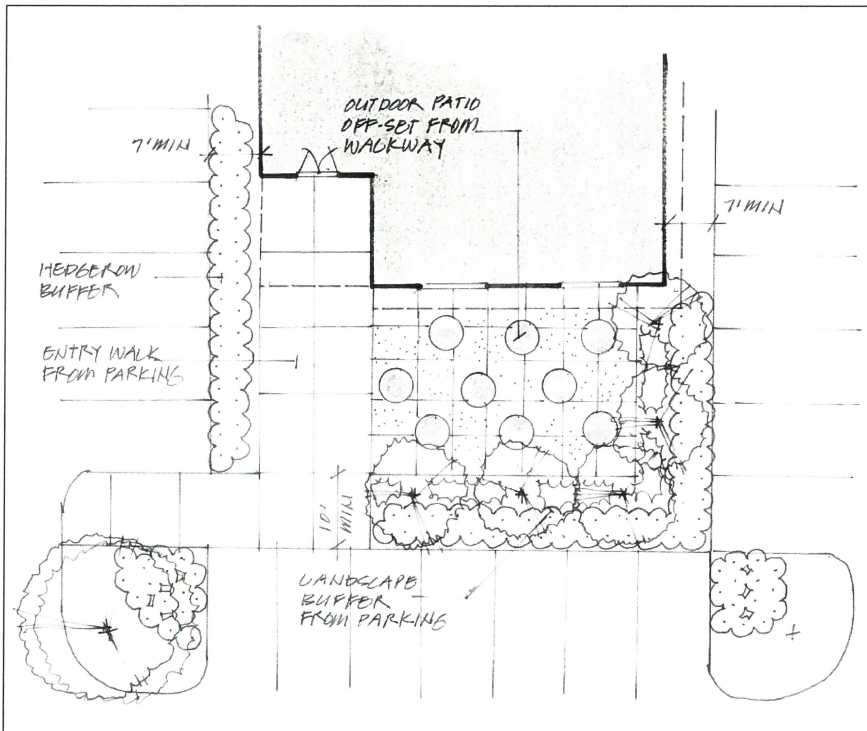
1175.05

Criteria for Site Development, continued



Entry area example

1175.05 Criteria for Site Development, continued



Outdoor patio area example

1175.05

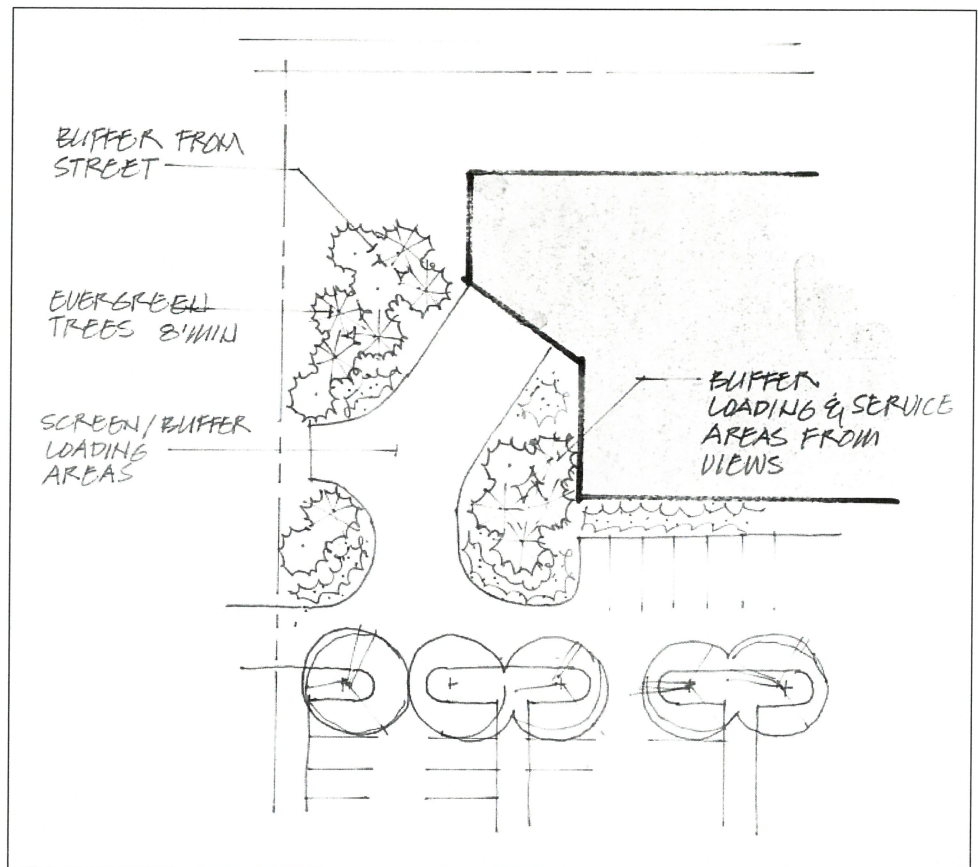
Criteria for Site Development, continued



Screen dumpster areas from views

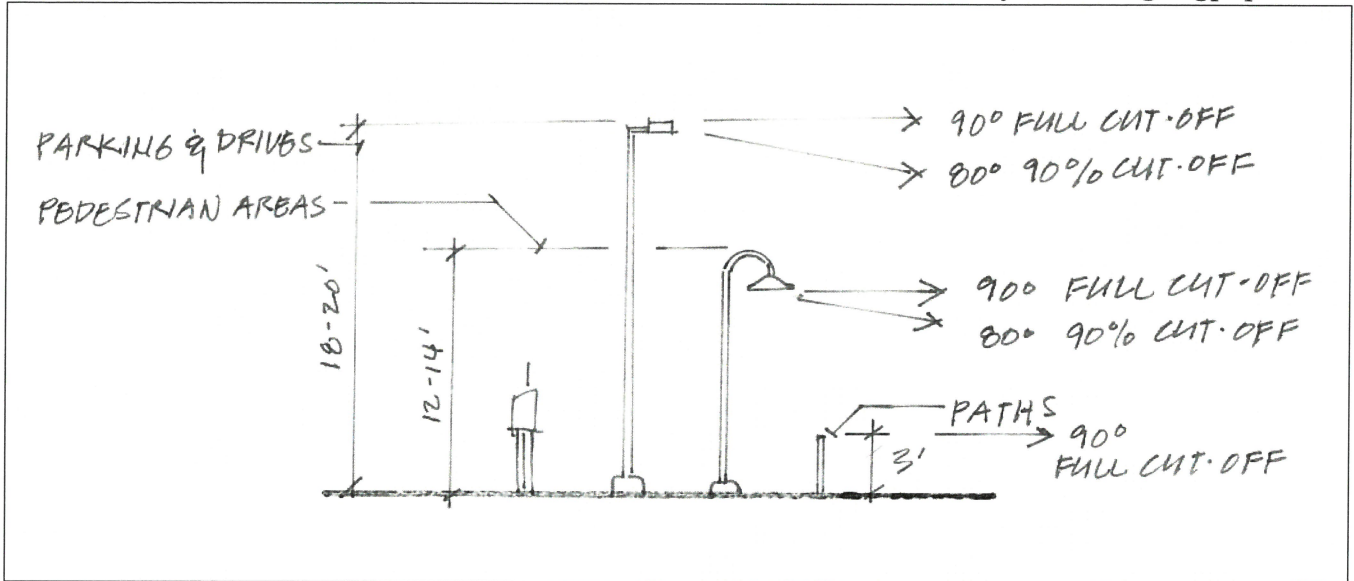


Buffer loading and service areas from views



Loading and service area buffer example

Guidelines for outdoor lighting proportions



Control lighting distribution with cut-off lighting fixtures

1175.06 Criteria for Landscaping



Sustainable practices — examples of bioswales

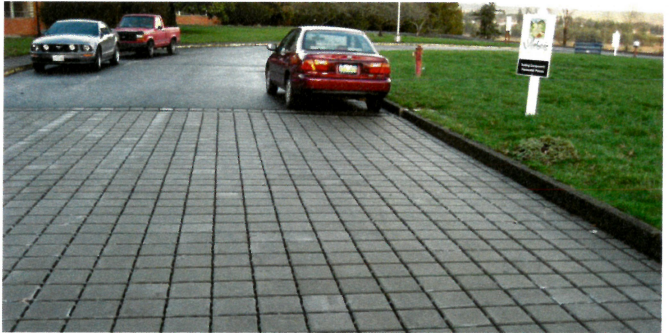
1175.06

Criteria for Landscaping, continued

Grass pavers on lightly traveled surfaces



Permeable pavers used as accents



City will reduce stormwater detention requirements to account for the use of sustainable practices



Sustainable practices — examples of porous pavements

1175.06 Criteria for Landscaping, continued



Sustainable practices — examples of rain gardens

LISTS OF RECOMMENDED PLANTS

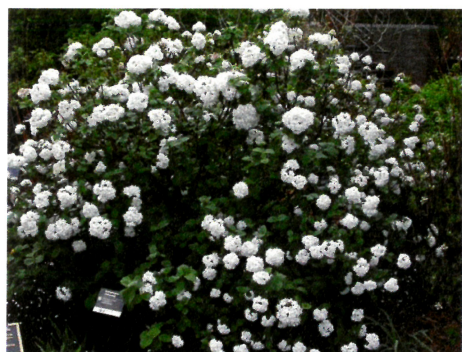
HEDGEROWS	
SCIENTIFIC NAME	COMMON NAME
Buxus x "Chicagoland Green"	Chicagoland Green Boxwood
Buxus x "Green Velvet"	Green Velvet Boxwood
Itea virginica "Little Henry"	Little Henry Dwarf Sweetspire
Lonicera xylosteum "Emerald Mound"	Emerald Mound Honeysuckle
Ribes alpinum "Green Mound"	Green Mound Alpine Currant
Rosa "White Out"	Knockout Rose – White Out
Spirea albiflora	Japanese White Spirea
Spirea nipponica "White Carpet"	White Carpet Spirea
SHRUBS	
SCIENTIFIC NAME	COMMON NAME
Cotoneaster apiculatus	Cranberry Cotoneaster
Cotoneaster horizontalis "Perpusillus"	Rock Cotoneaster
Diervilla lonicera	Dwarf Bush Honeysuckle
Exochorda x macrantha "The Bride"	The Bride Pearlbush
Fothergilla gardenii	Dwarf Fothergilla
Itea virginica "Henry's Garnet"	Henry's Garnet Sweetspire
Juniperus conferta "Blue Pacific"	Blue Pacific Juniper
Myrica pennsylvanica	Northern Bayberry
Rosa "White Out"	Knockout Rose – White Out
Syringa myeri	Palabin Lilac
Taxus x media "Everlow"	Everlow Yew
Vaccinium x "Ornablue"	Ornablue Blueberry
Viburnum carlesii "Compactum"	Compact Koreanspice Viburnum
Viburnum carlesii "Cayuga"	Cayuga Koreanspice Viburnum



Everlow Yew



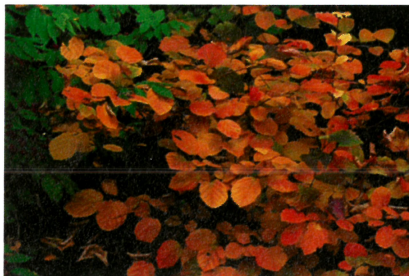
Cotoneaster berries



Compact Koreanspice Viburnum



Henry's Garnet Sweetspire



Dwarf Fothergilla



Cayuga Viburnum

LISTS OF RECOMMENDED PLANTS

SHADE TREES	
SCIENTIFIC NAME	COMMON NAME
<i>Acer campestre</i>	Hedge Maple
<i>Acer rubrum</i> "Red Sunset"	Red Sunset Red Maple
<i>Ginkgo biloba</i> "Princeton Sentry"	Princeton Sentry Ginkgo
<i>Gleditsia triacanthos inermis</i> "Skyline"	Skyline Honeylocust
<i>Sophora japonica</i> "Regent"	Regent Scholar Tree
<i>Tilia cordata</i> "Greenspire"	Greenspire Littleleaf Linden
<i>Zelkova serrata</i> "Green Vase"	Green Vase Zelkova
ORNAMENTAL FLOWERING TREES	
SCIENTIFIC NAME	COMMON NAME
<i>Amelanchier x grandiflora</i>	Apple Serviceberry
<i>Crataegus crus-galli f. inermis</i> "Crusader"	Crusader Hawthorn
<i>Crataegus viridis</i> "Winter King"	Winter King Hawthorn
<i>Magnolia virginiana</i>	Sweetbay Magnolia
<i>Malus</i> "Lancelot"	Lancelot Crabapple
<i>Malus sargentii</i>	Sargent Crabapple
<i>Malus</i> "Spring Snow"	Spring Snow Crabapple
EVERGREEN SCREEN TREES	
SCIENTIFIC NAME	COMMON NAME
<i>Thuja occidentalis</i> "Emerald"	Emerald Arborvitae
<i>Thuja occidentalis</i> "Nigra"	Dark Green Arborvitae
<i>Thuja occidentalis</i> "Pyramidalis"	Pyramidal Arborvitae



Green Vase Zelkova fall color



Red Sunset Maple



Emerald Arborvitae



Apple Serviceberry



Winter King Hawthorn

LISTS OF RECOMMENDED PLANTS

ORNAMENTAL GRASSES	
SCIENTIFIC NAME	COMMON NAME
Calamagrostis x acutiflora "Karl Foerster"	Karl Foerster Reed Grass
Deschampsia caespitosa "Goldstaub"	Golden Hair Grass
Miscanthus sinensis "Adagio"	Adagio Japanese Maiden Grass
Panicum virgatum "Heavy Metal"	Heavy Metal Switch Grass
Pennisetum alopecuroides	Fountain Grass
Pennisetum alopecuroides "Hameln"	Dwarf Fountain Grass
Schzachyrium scoparium "The Blues"	The Blues Little Bluestem



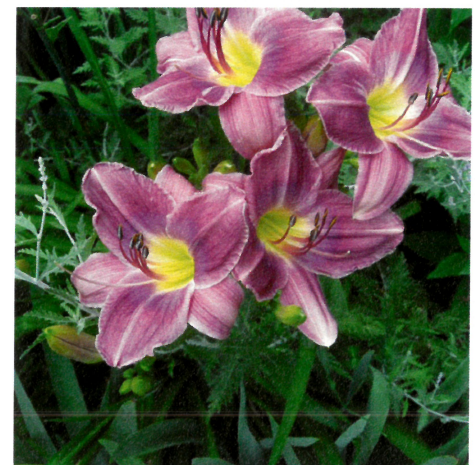
Fountain Grass

PERENNIALS	
SCIENTIFIC NAME	COMMON NAME
Achillea "Coronation Gold"	Coronation Gold Yarrow
Baptisia Australis	Blue False Indigo
Boltonia asteriodes "Snowbank"	Snowbank Bolton's Aster
Coreopsis verticillata "Zagreb"	Zagreb Coreopsis
Hemerocallis "Gentle Shepherd"	Gentle Shepherd Daylily
Hemerocallis "Happy Returns"	Happy Returns Daylily
Hemerocallis "Hyperion"	Hyperion Daylily
Hemerocallis "Ice Carnival"	Ice Carnival Daylily
Hemerocallis "Mary Todd"	Mary Todd Daylily
Hemerocallis "Prairie Blue Eyes"	Prairie Blue Eyes Daylily
Hemerocallis "Shari Harrison"	Shari Harrison Daylily
Nepeta "Walker's Low"	Walker's Low Catmint
Perovskia atriplicifolia	Russian Sage
Perovskia atriplicifolia "Little Spire"	Little Spire Russian Sage
Rudebackia fulgida var. "Viette's Little Suzy"	Little Suzy Black-Eyed Susan



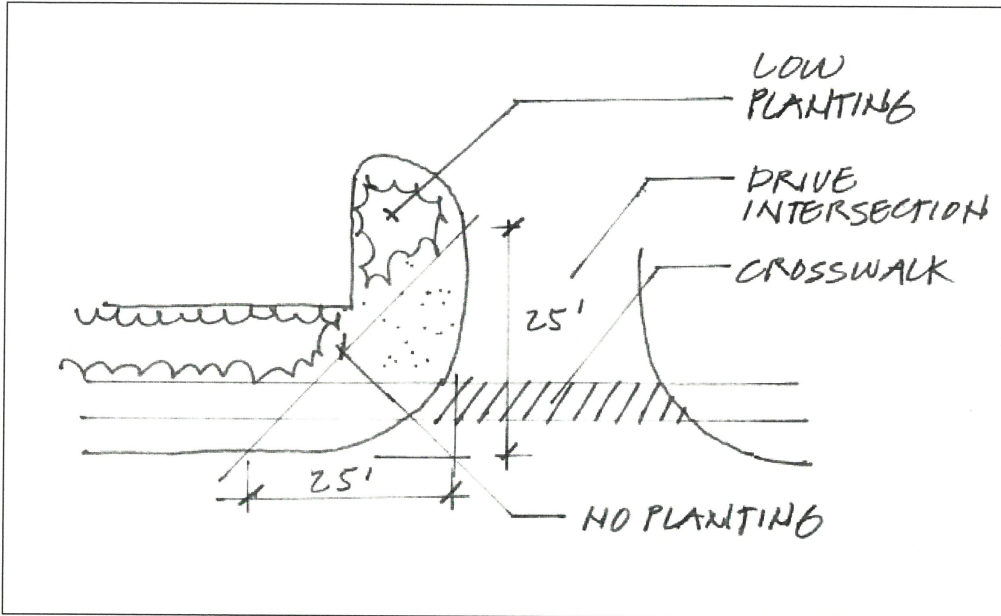
Walker's Low Catmint

GROUND COVERS	
SCIENTIFIC NAME	COMMON NAME
Juniperus conferta "Blue Pacific"	Blue Pacific Juniper
Pachysandra terminalis "Green Sheen"	Green Sheen Japanese Spurge
Sedum kamtschaticum ellacombianum	Yellow Stonecrop
Vinca minor	Periwinkle



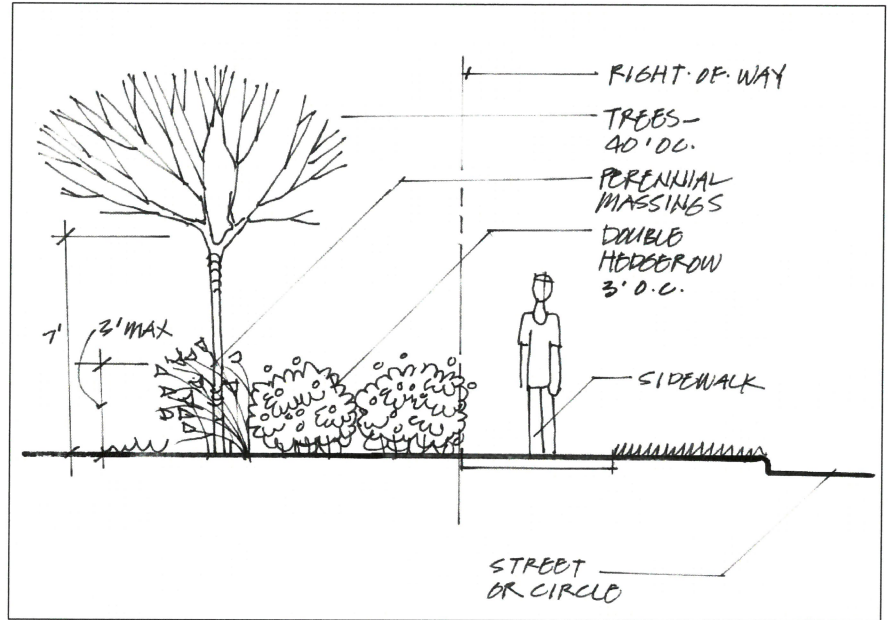
Shari Harrison Daylily

1175.06 Criteria for Landscaping, continued

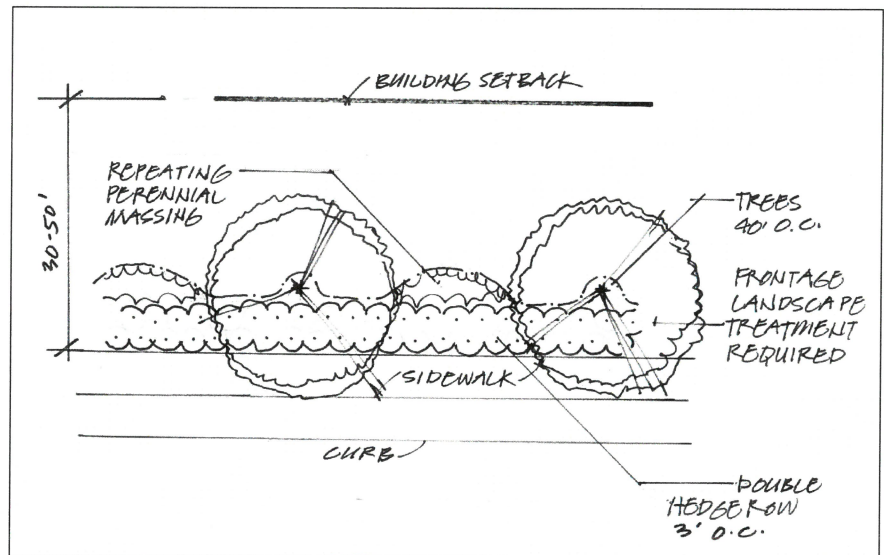


Planting at intersections example





Hedgerow elevation example



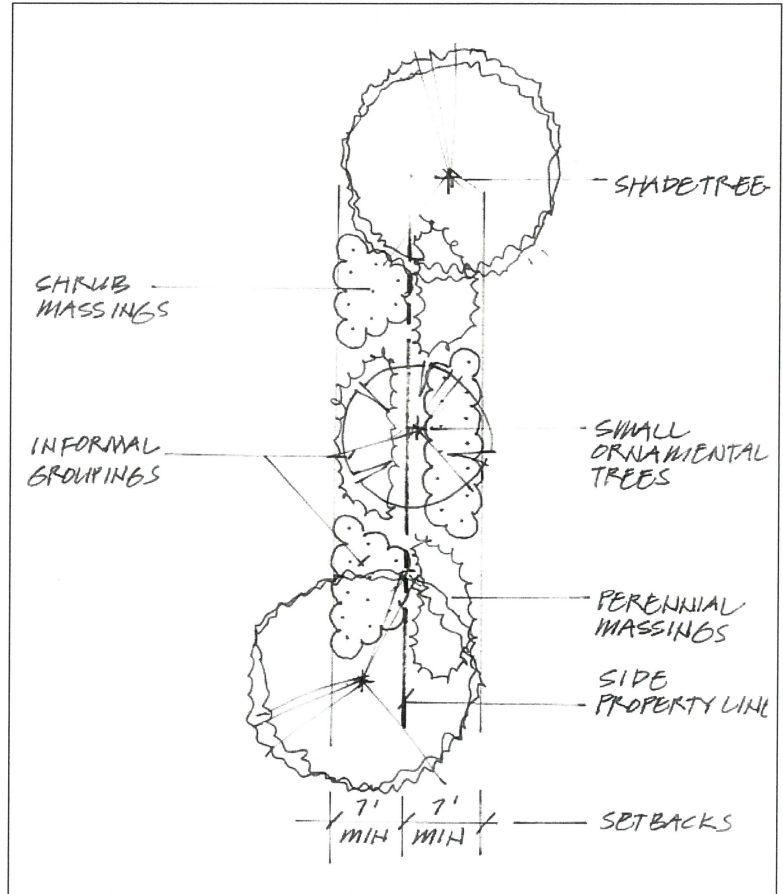
Hedgerow planting example

Double staggered hedgerows along frontage streets

1175.06

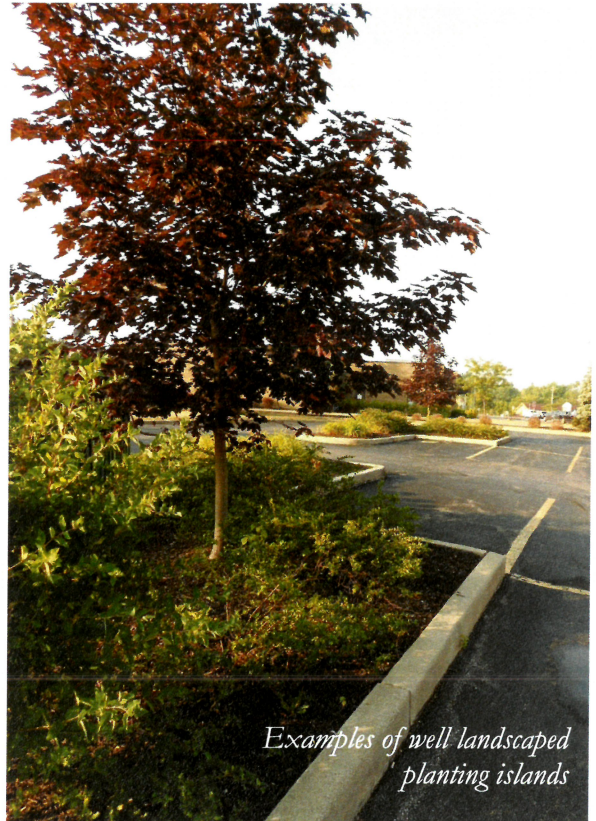
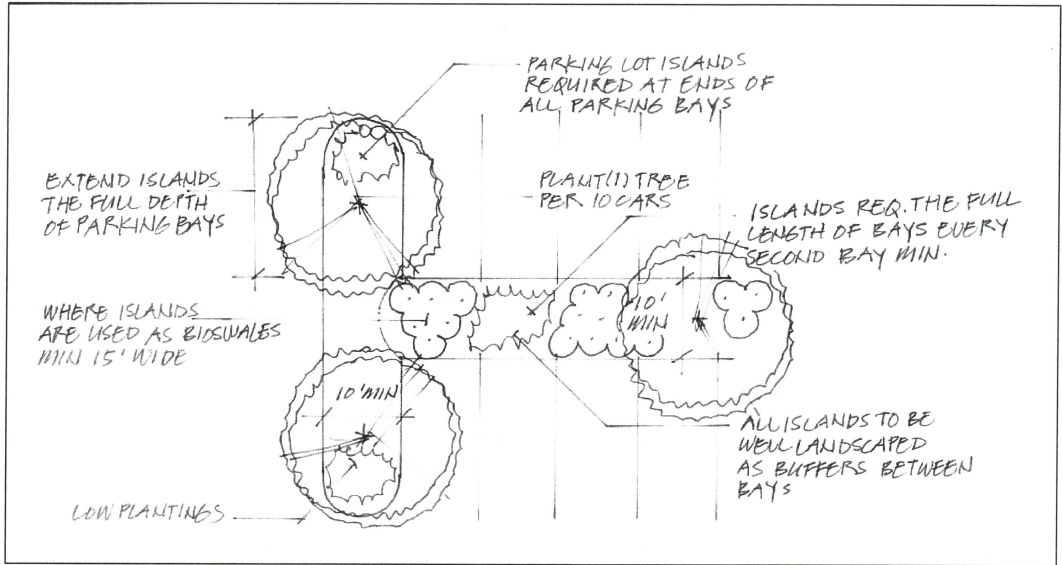
Criteria for Landscaping, continued

Sample side and rear yard plan



Examples of required side and rear yard buffers

Parking lot planting islands example



Examples of well landscaped planting islands

1175.06 Criteria for Landscaping, continued



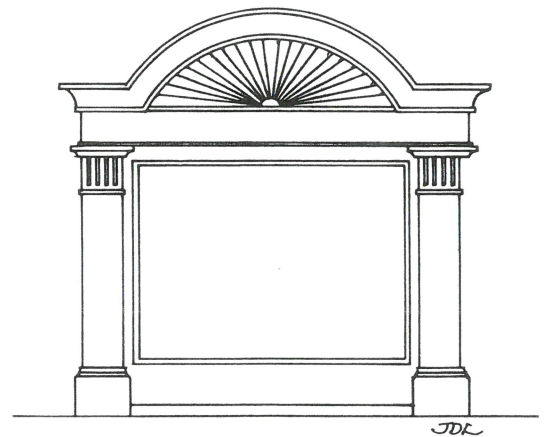
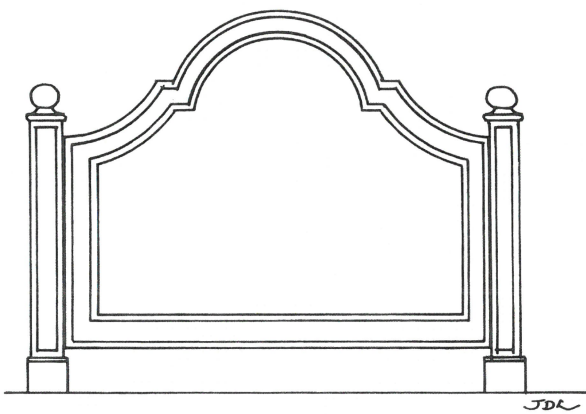
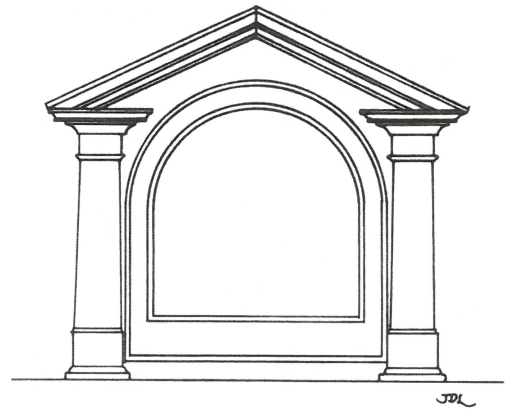
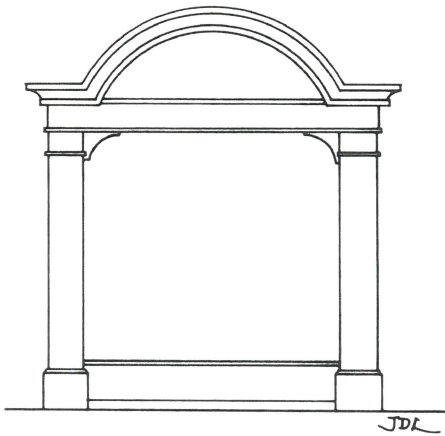
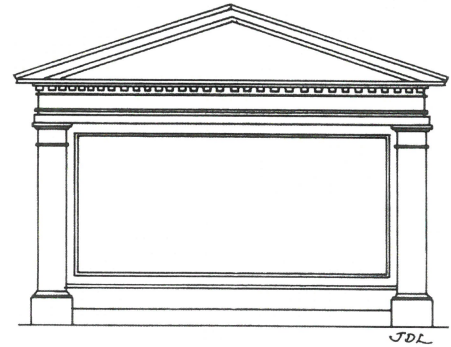
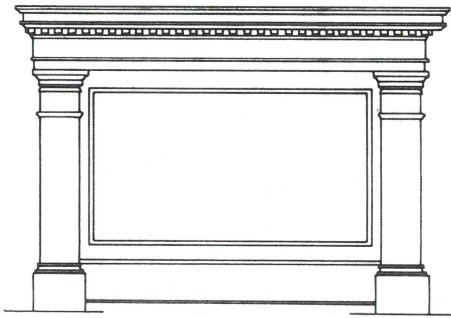
Examples of front yard and entry plantings

1175.07 Signs — Standards and Design Criteria

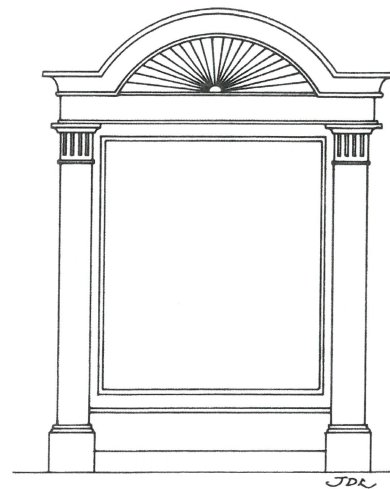
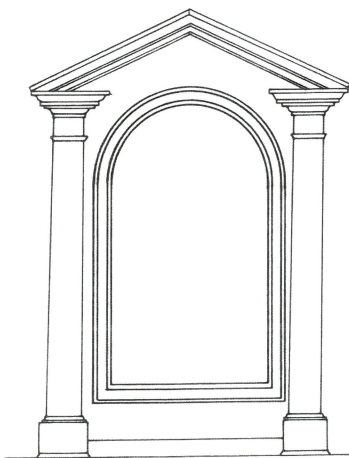
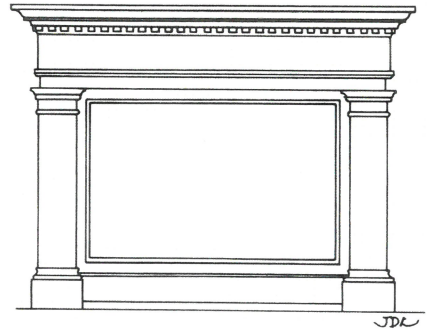
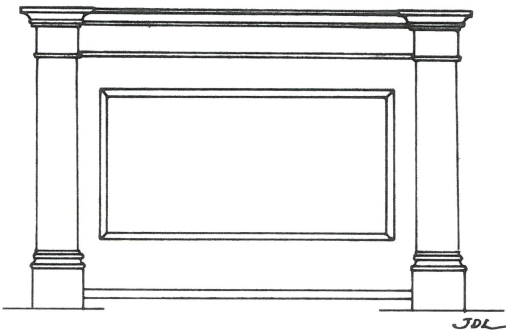
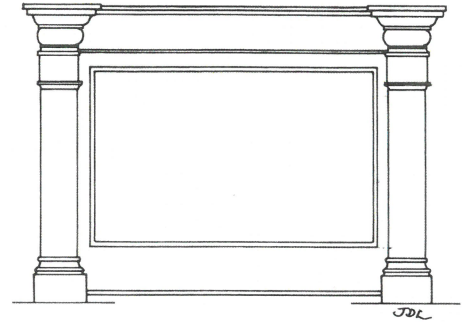
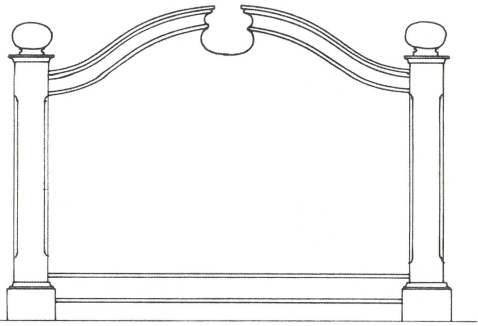


Examples of well proportioned wall signs

Freestanding sign drawings



Free-standing sign drawings





Freestanding Sign Examples



*Entrance and Instructional
sign examples*



1175.07 Signs — Standards and Design Criteria, continued

Signage lighting examples



Limit lighting to sign face, using cut-off directional fixtures